

Esempio di Modellazione mediante DASM: Grid

DASM per Grid

1

Sommario

- Definizione Grid per OGSA
 - Funzionalità
 - JEMS
- Stati di un Job e Requisiti
- DASM

DASM per Grid

2

Grid secondo OGSA

DASM per Grid

3

OGSA

- OGSA = Open Grid Service Architecture
- Definisce un insieme di specifiche che documentano i requisiti delle componenti hw/sw di una Grid

DASM per Grid

4

Definizione

- Per gli scopi del corso, una Grid è un insieme di unità computazionali **indipendenti, distribuite e cooperanti**, in grado di raggiungere uno specifico obiettivo computazionale all'interno di **organizzazioni virtuali dinamiche e multi-istituzionali** (*)
 - (*) I. Foster, C. Kesselman, and S. Tuecke, "The anatomy of the Grid: Enabling scalable virtual organizations", *Int. J. High Perform. Comput. Appl.*, vol. 15, n° 3, pp. 200-222, 2001

DASM per Grid

5

Funzionalità secondo OGSA

- OGSA identifica 6 principali funzionalità di una Grid:
 - **Execution Management Services (EMS)**;
 - Data Services;
 - Resource Management Services;
 - Security Services;
 - Self-Management Services;
 - Information Services
- Per gli scopi del corso è particolarmente interessante EMS

DASM per Grid

6

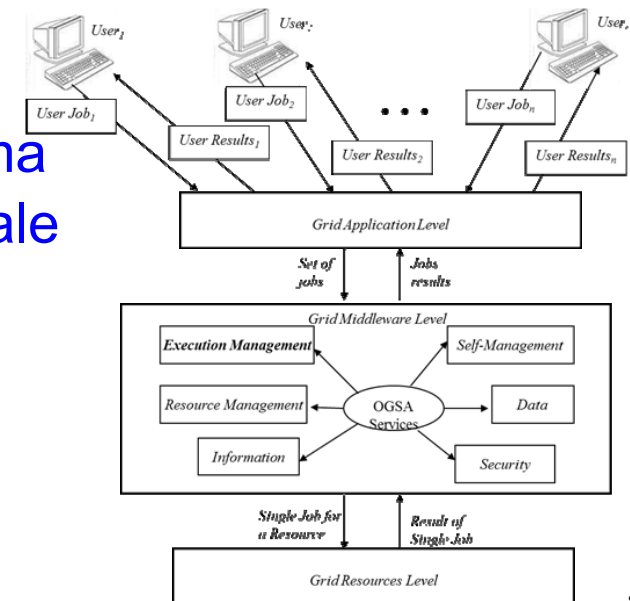
EMS secondo OGSA

- EMS address the job management and execution capability of a grid system and it is concerned with the research of candidate locations for
 - execution
 - preparation for execution
 - initiating and managing the execution of jobs until the end

DASM per Grid

7

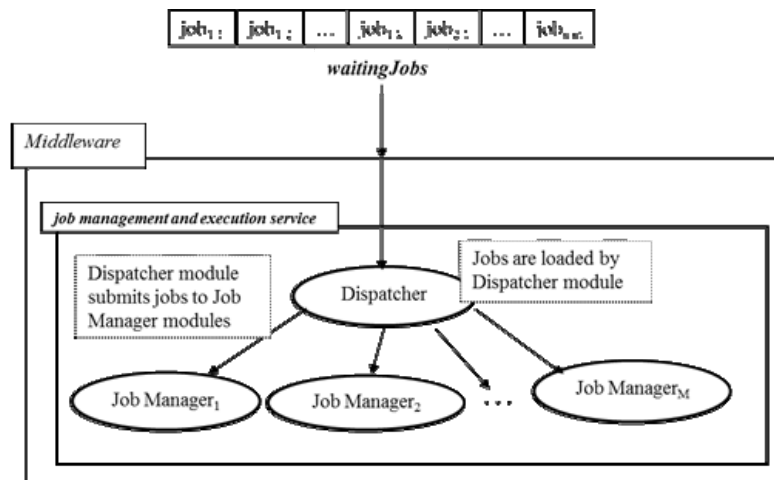
Schema Generale (1)



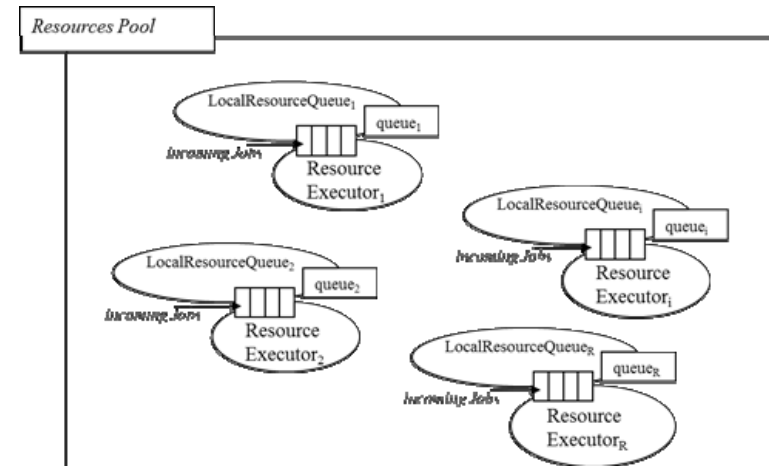
DASM per Grid

8

Schema Generale (2)



Schema Generale (3)



Stati di un Job e Requisiti

Tipi di Job

- Sequenziali / Batch
- Paralleli
- CheckPoint
- Interattivi
- DAG (job con interdipendenze, che possono essere modellati da un Grafo Diretto Aciclico)
- Partizionabili

Stati di un Job (1)

- **SUBMITTED:**
 - the user has submitted the job via UI
- **WAITING**
 - the WMS has received the job
- **READY**
 - A CE, which matches job requirements, has been selected, and the job is transferred to the JSS
- **SCHEDULED**
 - the JSS has sent the job to the CE

Stati di un Job (2)

- **RUNNING**
 - the job is running on the CE
- **DONE** this state has different meanings:
 - DONE (**ok**) : the execution has terminated on the CE (WN) with success
 - DONE (**failure**) : the execution has terminated on the CE (WN) with some problems
 - DONE (**cancelled**) : the job has been cancelled with success

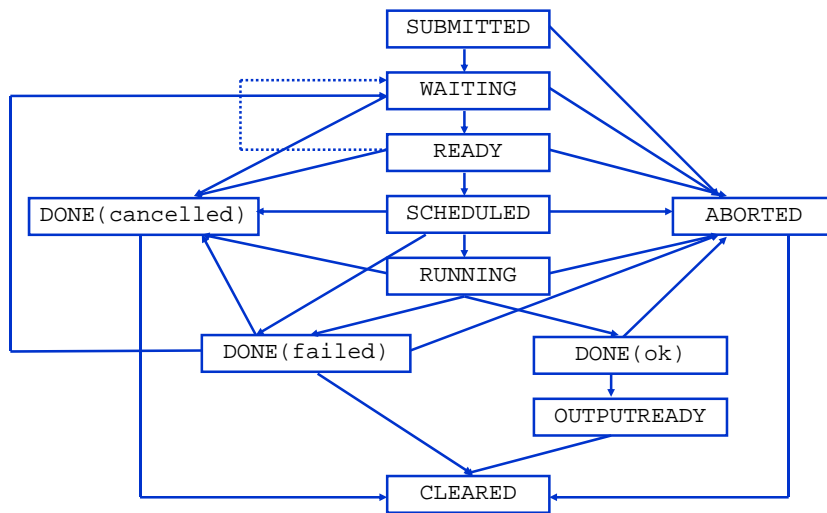
Stati di un Job (3)

- **OUTPUTREADY:**
 - the output sandbox is ready to be retrieved by the user
 - reflects the time difference between end of computation on CE and the moment WMS got necessary notification about job termination.
- **CLEARED:**
 - the user has retrieved all output files successfully, and the job bookkeeping information is purged some time after the job enters in this state.

Stati di un Job (4)

- **ABORTED:**
 - the job has failed
 - The job may fail for several reasons one of them is external to its execution (no resource found).

Diagramma degli Stati



DASM per Grid

17

Requisiti (1)

- **Req.1** A job can be submitted to the grid; if there is no job, the system remains in a inactivity state.
- **Req.2** The grid middleware checks the matchmaking between resources and job constraints before the execution; if there are problems (e.g. lack of memory or of devices, or slow CPU speed, etc.) the system reject the job.
- **Req.3** After accepting the job the system runs it.

DASM per Grid

18

Requisiti (2)

- **Req.4** If there are no failures the job is completed; on the other case the job fails.
- **Req.5** A user can cancel a job every time.
- **Req.6** At the end of the computation (job completed or aborted for every reason) every resource is released.
- **Req.7** If software or hardware errors occur the job is aborted.
- **Req.8** At the end of every computation the result is communicated to the end user.

DASM per Grid

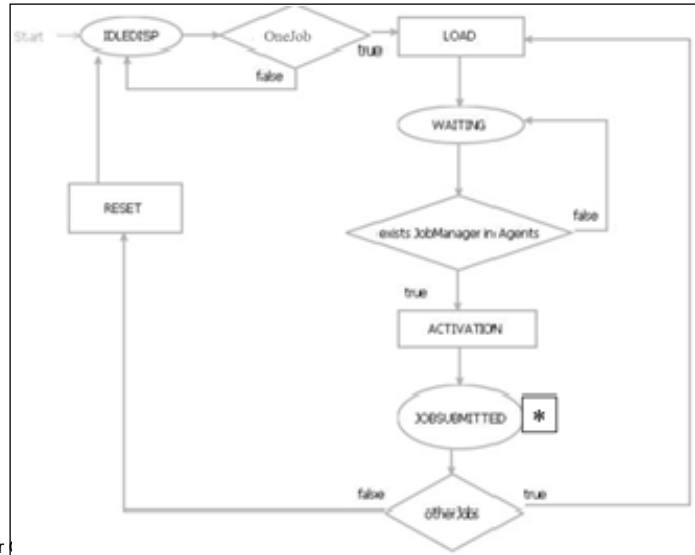
19

DASM

DASM per Grid

20

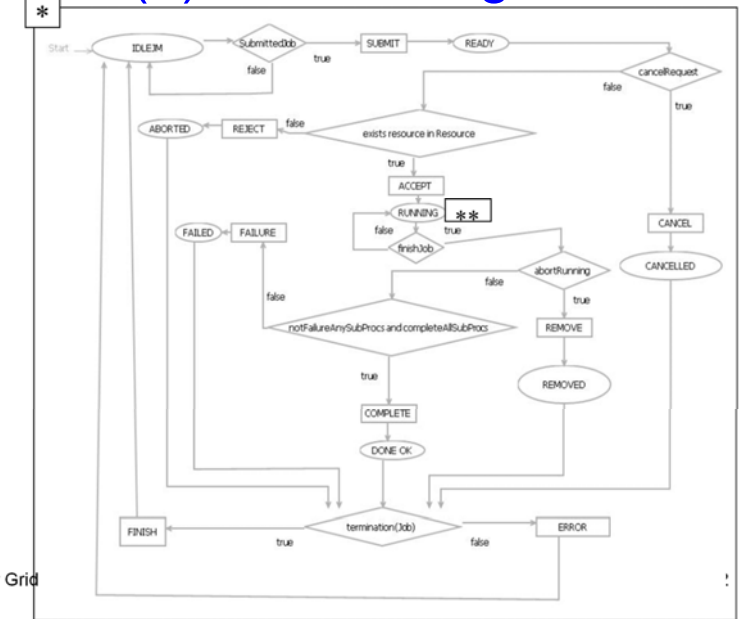
GM (1): Dispatcher



DASM per

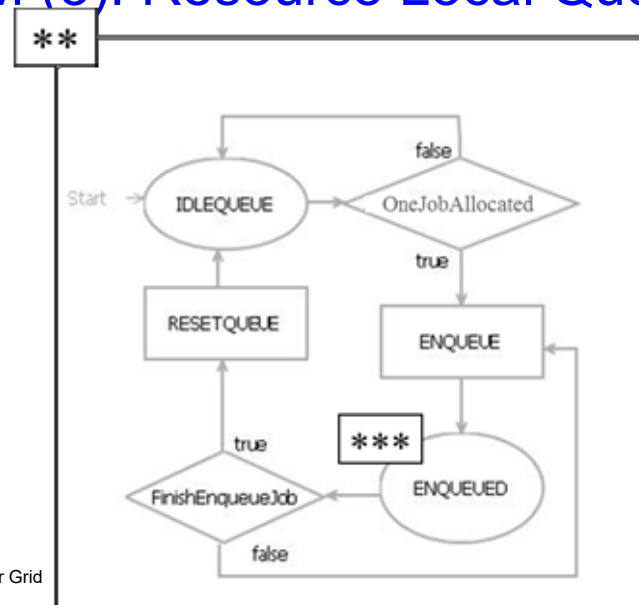
21

GM (2): Job Manager



DASM per Grid

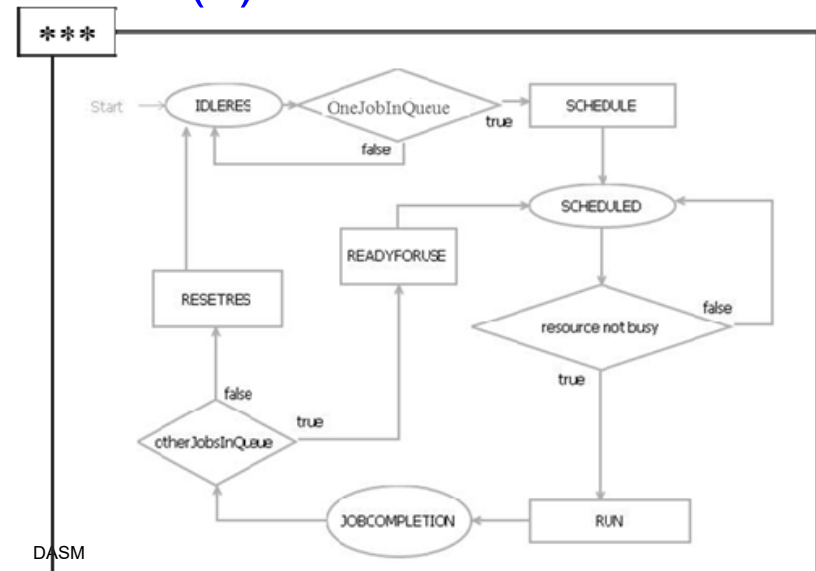
GM (3): Resource Local Queue



DASM per Grid

23

GM (4): Resource Executor



DASM

24